

CAVALIER AUCTIONS

Online Fine Art Auctions www.cavalierauctions.com

SPRING AUCTION

May 1 - 9, 2025

www.cavalierauctions.com



LOT 1

Hans Hofmann

German, 1880–1966

Untitled

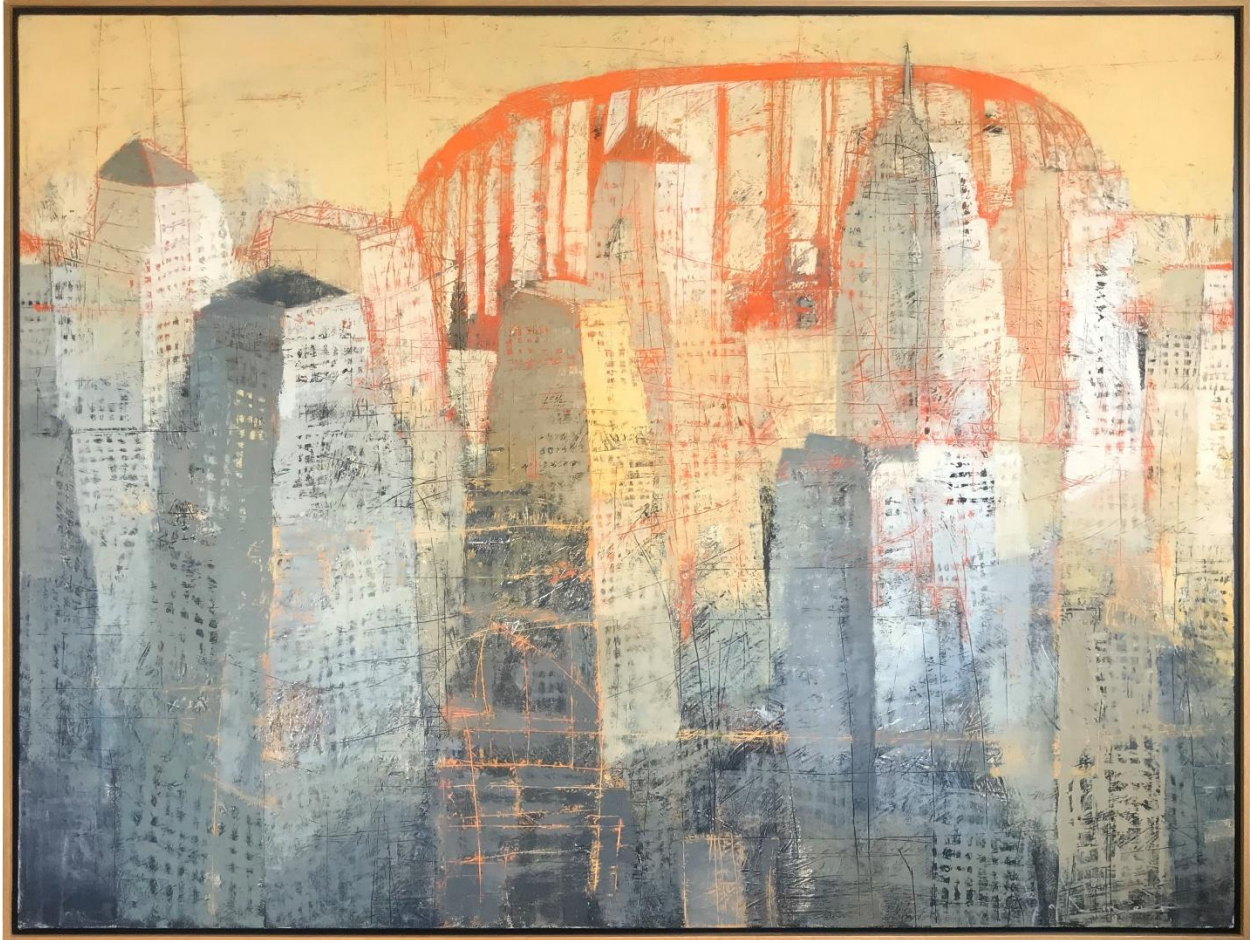
1941

india ink on paper

17 x 14 in.

Frame: 24 1/2 x 21 3/8 in.

Estimate: \$14,000-\$15,000



LOT 2

Paul Balmer

South African, b. 1965

Haze on Manhattan

oil on canvas

54 x 72 in.

Frame: 55 3/4 x 73 3/4 in

Estimate: \$15,000-\$16,000



LOT 3

Paul Balmer

South African, b. 1965

High Rise

oil on canvas

64 x 64 in.

Frame: 65 3/4 x 65 3/4 in.

Estimate: \$14,000-\$15,000



LOT 4

Scott Duce

American, b. 1956

Oppidan Series: 3A.52.SE

2012

oil on panel

12 x 12 in.

unframed

Estimate: \$1,000-\$1,200



LOT 5

Scott Duce

American, b. 1956

Vocho Viejo .04

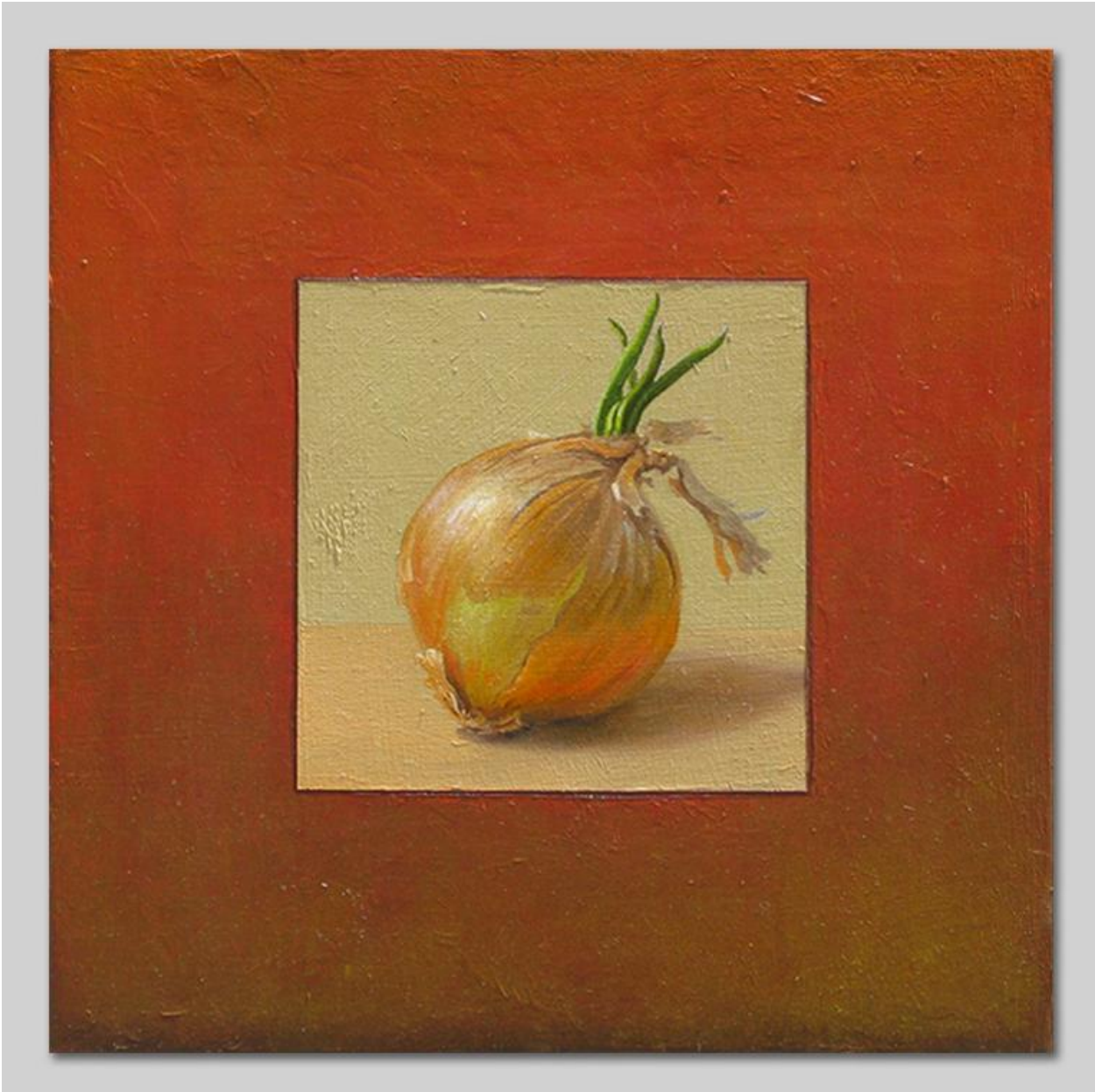
2016

oil on panel

8 x 8 in.

unframed

Estimate: \$700-\$800



LOT 6

Scott Duce

American, b. 1956

Study 306 (onion)

2012

oil on panel

9 x 9 in.

unframed

Estimate: \$750-\$850



LOT 7

Robert Stark III

American, b. 1964

Lime on an Edge

1996

oil on board

7 1/8 x 3 3/8 in.

Frame: 8 1/8 x 4 3/8 in.

Estimate: \$3,000-\$4,000



LOT 8

Joel Carson Jones

American, b. 1975

Clowning

2011

oil on panel

5 1/4 x 4 in.

Frame: 8 1/4 x 7 1/2 in.

Estimate: \$2,400-\$2,800



LOT 9

Joel Carson Jones

American, b. 1975

Glancing

2014

oil on panel

9 x 6 1/2 in.

Frame: 13 x 10 1/2 in.

Estimate: \$4,500-\$5,500



LOT 10

Joel Carson Jones

American, b. 1975

Penny for your Thoughts

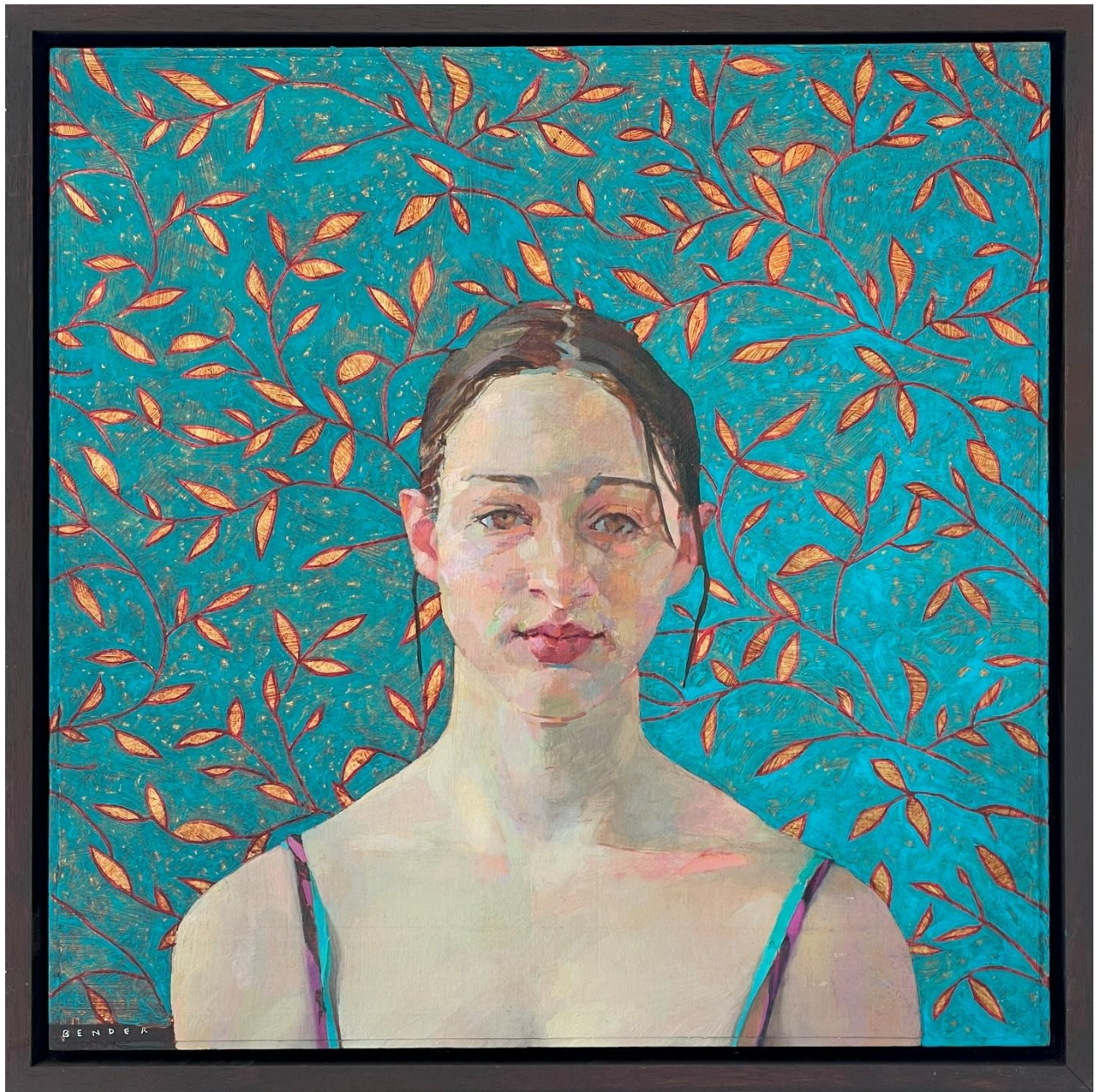
2010

oil on panel

10 x 8 in.

Frame: 13 5/8 x 11 5/8 in.

Estimate: \$5,000-\$6,000



LOT 11

David Bender

American, b. 1951

Portrait of a young woman

2024

Oil on canvas mounted on board

15 1/4 x 15 1/4 in.

Frame: 16 1/2 x 16 1/2 in.

Estimate: \$1,800-\$2,000



LOT 12

Peregrine Heathcote

British, b. 1973

Meeting Point

2021

oil on canvas

14 x 20 in.

Frame: 24 x 28 in.

Estimate: \$4,000-\$5,000



LOT 13

Amy Bennett

American, b. 1977

Gawker

2018

oil on panel

18 x 13 in.

Frame: 20 1/2 x 15 1/2 in.

Estimate: \$18,000-\$20,000



LOT 14

Leonard Everett Fisher

American, 1924-2024

Sea Songs II

2008

acrylic on canvas

36 x 36 in.

unframed

Estimate: \$12,000-\$15,000



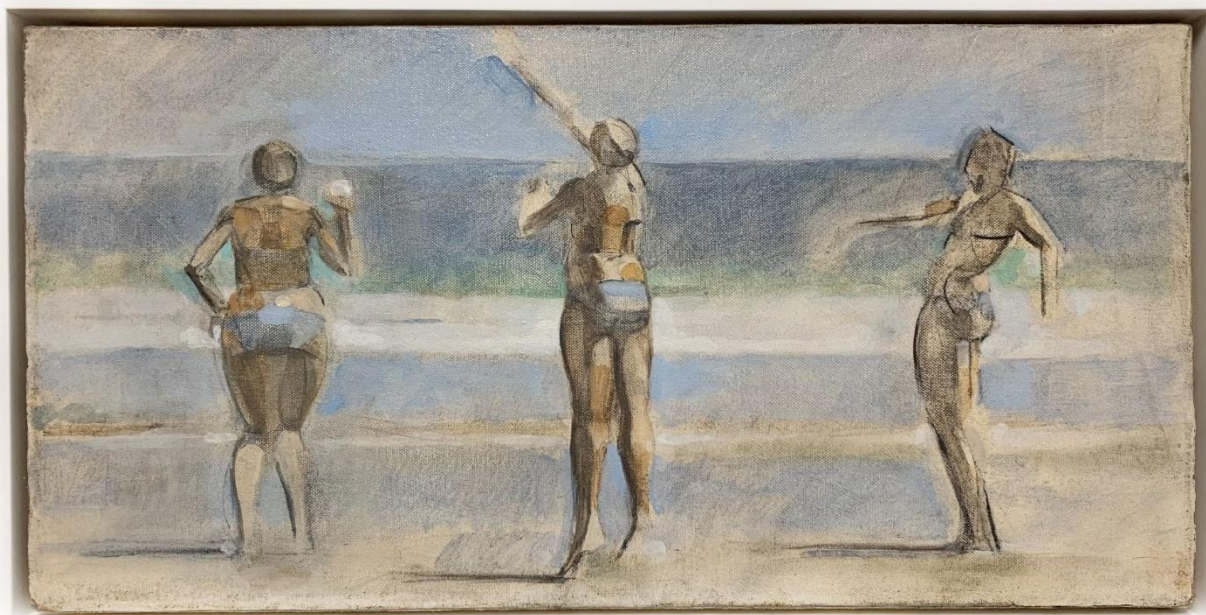
LOT 15

Simon Levenson
American, b. 1971
Mother and Child
2013

oil on canvas

7 x 9 in.

Estimate: \$1,000-\$1,200



LOT 16

Simon Levenson

American, b. 1971

Out, study

2019

oil on canvas

8 x 14 in.

Frame: 9 x 15 in.

Estimate: \$2,000-\$3,000



LOT 17

Simon Levenson

American, b. 1971

Play

2012

oil on board

8 x 16 in.

Frame: 13 3/4 x 21 3/4 in.

Estimate: \$2,000-\$3,000



LOT 18

David Levine

American, 1926-2009

Rowing in the Park

c. 1950

watercolor and pencil on paper

5 x 7 1/4 in.

Frame: 9 x 10 1/2 in.

Estimate: \$2,500-\$3,500



LOT 19

Robert Stark

American, 1933–2014

Untitled (Rower in Fog)

oil on panel

8 x 12 in.

Frame: 9 5/8 x 13 3/8 in.

Estimate: \$12,000–\$14,000



LOT 20

Robert Stark

American, 1933–2014

Untitled (Pink Sail)

oil on panel

10 x 14 in.

Frame: 13 1/4 x 17 5/8 in.

Estimate: \$22,000-\$25,000



LOT 21

Robert Stark

American, 1933–2014

Untitled (Landscape of Ireland)

oil on panel

14 x 26 1/2 in.

Frame: 17 x 29 1/4 in.

Estimate: \$15,000-\$16,000



LOT 22

William Matthews

American, b. 1949

Applying the Baseball

2003

watercolor on paper

29 ¼ x 28 ¾ in.

Frame: 41 1/8 x 40 1/2 in.

Estimate: \$20,000-\$22,000



LOT 23

William Matthews

American, b. 1949

Cecil Wetzstein Pushing Pairs

2001

watercolor on paper

18 3/4 x 38 in.

Frame: 33 x 51 5/8 in.

Estimate: \$15,000-\$17,000



LOT 24

William Matthews

American, b. 1949

Across Montana

2007

watercolor on paper

15 3/4 x 31 3/4 in.

Frame: 27 x 42 in.

Estimate: \$13,000-\$14,000



LOT 25

Doug Brega

American, b. 1948

Atlantic Avenue, Overlooking Narraganset Bay, Rhode Island

watercolor

17 x 26 1/2 in.

Frame: 24 1/2 x 34 in.

Estimate: \$6,000-\$8,000



LOT 26

Doug Brega

American, b. 1948

Monhegan View

watercolor

22 x 30 in.

Frame: 30 3/4 x 38 3/4 in.

Estimate: \$8,000-\$12,000



LOT 27

Doug Brega

American, b. 1948

Monhegan Light

watercolor

22 x 30 in.

Frame: 30 3/4 x 38 3/4 in.

Estimate: \$8,000-\$12,000



LOT 28

Gene Speck

American, b. 1936

Before Dark

1998

oil on board

9 x 12 in.

Frame: 15 1/2 x 18 1/2 in.

Estimate: \$3,500-\$4,500



LOT 29

Gene Speck

American, b. 1936

Mountain Quail

1998

oil on board

14 x 11 in.

Frame: 23 x 20 in.

Estimate: \$4,500-\$5,000



LOT 30

Gene Speck

American, b. 1936

On the High Desert

1998

oil on board

11 x 14 in.

Frame: 15 5/8 x 22 5/8 in.

Estimate: \$4,500-\$5,000



LOT 31

Raphael Soyer

Russian-American, 1899-1987

Untitled Landscape

c. 1955

oil on linen

16 1/2 x 26 1/4 in.

Frame: 23 3/4 x 33 3/4 in.

Estimate: \$3,000-\$5,000



LOT 32

Mary Rosamond Coolidge

American, 1884-1978

Lake scene

oil on canvas

16 x 20 in.

Frame: 23 x 27 in.

Estimate: \$800-\$1,000



LOT 33

David Bareford

American, b. 1947

Farm

c. 2010

oil on board

15 x 22 in.

Frame: 20 1/2 x 27 1/2 in.

Estimate: \$3,500-\$4,500



LOT 34

David Bareford

American, b. 1947

Beach Roses

c. 2008

oil on board

20 x 30 in.

Frame: 27 x 37 in.

Estimate: \$3,500-\$4,500



LOT 35

David Bareford

American, b. 1947

Lighthouse Eastern Point

2024

oil on board

18 x 24 in.

Frame: 24 x 30 in.

Estimate: \$4,500-\$5,500



LOT 36

Lori Zummo

American, b. 1962

Nantucket Backyard Garden

2023

oil on canvas

24 x 36 in.

Frame: 312 1/2 x 43 1/2 in.

Estimate: \$8,000-\$10,000



LOT 37

Lori Zummo

American, b. 1962

Madaket Harbor in Autumn

2007

oil on board

16 x 24 in.

Frame: 19 1/2 x 25 1/2 in.

Estimate: \$3,500-\$4,500



LOT 38

Lori Zummo

American, b. 1962

Flower Fields at Bartlett Farm

2008

oil on canvas

16 x 24 in.

unframed

Estimate: \$5,500-\$7,500



LOT 39

Jack Saylor

American, b. 1960

Special Marine Warning

2024

oil on canvas

8 x 14 in.

Frame: 13 3/4 x 19 3/4 in.

Estimate: \$3,000-\$4,000



LOT 40

Jack Saylor

American, b. 1960

The Splashdown

2024

oil on canvas

8 x 14 in.

Frame: 13 3/4 x 19 3/4 in.

Estimate: \$3,000-\$4,000



LOT 41

Renato Muccillo

Canadian, b. 1965

July Illumination

oil on panel

18 x 18 in.

Frame: 26 x 26 in.

Estimate: \$5,500-\$6,500



LOT 42

Tracy Helgeson

American, b. 1964

Headlights

oil on panel

5 x 7 in

Frame: 6 1/2 x 8 1/2 in.

Estimate: \$600-\$800



LOT 43

Yury Darashkevich

Belarusian, b. 1962

Sun in Woods

2008

acrylic on wood panel

10 x 30 in.

Frame: 11 1/2 x 31 1/2 in.

Estimate: \$2,000-\$3,000



LOT 44

Yury Darashkevich
Belarusian, b. 1962

Solo

2024

acrylic on wood panel

48 x 48 in.

unframed

Estimate: \$7,500-\$9,500



LOT 45

Yury Darashkevich

Belarusian, b. 1962

Humble Challenge

2025

acrylic on wood panel

32 x 48 in.

unframed

Estimate: \$6,200-\$7,200



LOT 46

Joseph Couture

Belgian, 1890-1965

2 views, Cloisters of Cathedrale Saint-Trophime, Arles, France

1914

oil on board

10 1/2 x 13 1/3 in. each

Frame: 15 7/8 x 18 5/8 in. each

Estimate: \$800-\$1,000



LOT 47

Marla Korr

American, b. 1950

Morning on the Mall, Central Park

2013

oil on linen

21 x 36 in.

Frame: 26 1/4 x 41 1/2 in.

Estimate: \$5,500-\$7,500



LOT 48

Marla Korr

American, b. 1950

Madaket Marsh

2017

oil on linen

24 x 30 in.

Frame: 29 x 35 7/8 in.

Estimate: \$5,000-\$7,000



LOT 49

Jan Pawlowski

Polish, b. 1949

Red Carriage in Manhattan

2016

oil on canvas

30 x 24 in.

Frame: 36 x 30 in.

Estimate: \$6,000-\$8,000



LOT 50

Jan Pawlowski

Polish, b. 1949

Peonies and White Roses

oil on canvas

24 x 20 in.

Frame: 30 1/2 x 26 1/2 in.

Estimate: \$4,500-\$6,500



LOT 51

John Terelak

American, b. 1942

Striped Bass

2024

oil on canvas

30 x 40 in.

Frame: 37 1/4 x 47 1/4 in.

Estimate: \$10,000-\$12,000



LOT 52

John Terelak

American, b. 1942

Half Moon Beach

2020

oil on canvas

28 x 36 in.

Frame: 35 3/4 x 43 3/4 in.

Estimate: \$10,000-\$12,000



LOT 53

John Terelak

American, b. 1942

On the Beach

oil on canvas

28 x 36 in.

Frame: 37 x 45 in.

Estimate: \$9,000-\$12,000



LOT 54

John Terelak

American, b. 1942

Fishing Buddies

2005

oil on canvas

24 x 30 in.

Frame: 32 x 38 in.

Estimate: \$6,000-\$7,000



LOT 55

Thomas Michael (T.M.) Nicholas

American, b. 1963

Afternoon Light, Vermont

oil on canvas

30 x 40 in.

Frame: 38 x 48 in.

Estimate: \$7,000-\$9,000



LOT 56

Anthony Blake

New Zealander, b. 1951

Nantucket Evening

c. 2000

oil on canvas

20 x 30 in.

Frame: 27 1/2 x 37 1/2 in.

Estimate: \$8,000-\$12,000



LOT 57

Nicolaas Riegen

Dutch, 1827-1889

Boats and Approaching Storm

1869

oil on panel

9 3/4 x 13 in.

Frame: 15 1/2 x 19 in.

Estimate: \$4,000-\$6,000



LOT 58

James Edward Buttersworth

British, 1817–1894

SAPPHO leading DAUNTLESS Around the Mark

c. 1872

oil on canvas

12 1/2 x 16 in.

Frame: 18 1/2 x 22 1/2 in.

Estimate: \$55,000-\$65,000



LOT 59

Patrick Meehan

American

Three Flags on the Bay

oil on linen panel

9 x 12 in.

Frame: 14 1/2 x 17 1/2 in.

Estimate: \$800-\$1,000



LOT 60

Louis Guarnaccia

American, b. 1958

Start Gun for the 12 Meters, Opera House Cup, Nantucket
2008

oil on linen

20 x 24 in.

Frame: 27 1/2 x 31 1/2 in.

Estimate: \$6,000-\$8,000



LOT 61

Louis Guarnaccia

American, b. 1958

Prelude to the Cup, Opera House Cup, Nantucket

2008

oil on linen

20 x 36 in.

Frame: 26 1/2 x 42 1/2 in.

Estimate: \$8,000-\$10,000



LOT 62

Louis Guarnaccia

American, b. 1958

Water Fencing, Opera House Cup

2011

oil on linen

12 x 24 in.

Frame: 15 3/4 x 27 3/4 in.

Estimate: \$3,000-\$4,000



LOT 63

Jeremy Rugge-Price

British, b. 1940

USS RANDOLPH v HMS YARMOUTH

2025

oil on canvas

18 x 24 in.

Frame: 23 1/2 x 29 1/2 in

Estimate: \$2,800-\$3,200



LOT 64

Jeremy Rugge-Price

British, b. 1940

HMS ARGOSY of the Coast of Tunis

2025

oil on canvas

18 x 24 in.

Frame: 23 1/2 x 29 1/2 in

Estimate: \$2,800-\$3,200



LOT 65

Nicholas Berger

American, b. 1949

Friends (Just the Guys)

2023

oil on panel

23 x 30 in.

Frame: 28 x 36 in.

Estimate: \$8,000-\$10,000



LOT 66

Nicholas Berger

American, b. 1949

Full Steam

2011

oil on panel

9 1/2 x 15 in.

Frame: 14 1/2 x 20 1/8 in.

Estimate: \$2,400-\$2,800



LOT 67

Nicholas Berger

American, b. 1949

Bow Bridge, Study in Spring

2016

oil on panel

6 x 11 in.

Frame: 8 1/2 x 13 1/2 in.

Estimate: \$1400-\$1800



LOT 68

Ray Ward

Canadian, b. 1968

Acquamarine

oil on panel

9 x 9 in.

Frame: 12 1/2 x 12 1/2 in.

Estimate: \$1,000-\$1,200



LOT 69

Alfredo Navarro

Spanish, b. 1965

Lost Memories

oil on panel

13 x 10 in.

Frame: 19 1/2 x 16 1/2 in.

Estimate: \$4,000-\$5,000



LOT 70

Jeanne Rossier-Smith

American, b. 1966

Coppertone

pastel on panel

6 x 12 in.

Frame: 9 x 15 in.

Estimate: \$1,000-\$1,200



LOT 71

LaVerne Christopher

American

Untitled (Harbor Scene)

oil on linen

18 x 24 in.

Frame: 23 3/4 x 29 3/4 in.

Estimate: \$1,200-\$1,500



LOT 72

John Ebersberger

American, b. 1956

White Wicker

oil on panel

16 x 12 in.

Frame: 21 x 17 in.

Estimate: \$1,000-\$1,500



LOT 73

James Harrington

American, 1929-2016

Window Shopping

oil on canvas

14 x 18 in.

Frame: 21 1/4 x 25 in.

Estimate: \$1,200-\$1,500



LOT 74

Maurice Utrillo

French, 1883-1955

Untitled (Street Scene)

lithograph with pochoir

12 x 10 in.

unframed

\$600-\$800



LOT 75

Ludwig Bemelmans

Austrian-American, 1898-1962

Île de la Cité

Hand colored lithograph

18 x 22 in.

Frame: 30 x 26 in.

Estimate: \$800-\$1,000



LOT 76

Gerald K. Geerlings

American, 1897-1998

East River, NYC Pier

watercolor on paper

9 1/2 x 13 1/2 in.

Frame: 17 1/2 x 21 in.

\$600-\$800



LOT 77

Gerald K. Geerlings

American, 1897-1998

Olympus

1929

drypoint on paper

8 7/8 x 6 in. / Sheet: 16 1/8 x 10 3/4 in.

Unframed

\$1,000-\$2,000



LOT 78

Nina Maguire

American, 1933-2023

Via Sistina

2007

acrylic on canvas

7 x 5 in.

Frame: 13 3/4 x 11 3/4 in.

Estimate: \$2,000-\$2,500



LOT 79

Hsin-Yao Tseng

Taiwanese, b. 1986

First Snow in New York City

oil on panel

18 x 18 in.

Frame: 21 x 21 in.

Estimate: \$4,000-\$5,000



LOT 80

Vincent Giarrano

American, b. 1960

Tables at Minetta's

oil on panel

9 x 12 in.

Frame: 13 1/2 x 16 1/2 in.

Estimate: \$3,000-\$4,000



LOT 81

Alice Dalton Brown

American, b. 1939

Pink Reflected

1993

pastel on paper

16 1/2 x 24 in.

Frame: 22 3/4 x 30 1/2 in.

Estimate: \$5,000-\$6,000



LOT 82

Geoffrey Johnson
American, b. 1965
Untitled (Park Scene)
oil on panel
30 x 19 in.
Frame: 35 x 24 in.
\$7,000-\$9,000



LOT 83

Christophe von Hohenberg

American, b. 1952

Retrievers in the Mist, Ed. 1/6

2023

archival pigment print

28 x 42 in.

Frame: 33 x 47 in.

Estimate: \$7,000-\$8,000



LOT 84

Nathan Coe

British, b. 1979

Decisions Decisions, Ed. 2/10

2016

archival pigment print

30 x 40 in.

unframed

Estimate: \$6,000-\$8,000



LOT 85

Nathan Coe

British, b. 1979

Rollercoaster, Ed. 1/5

2023

archival pigment print

18 x 24 in.

unframed

Estimate: \$3,000-\$4,000



LOT 86

Nathan Coe

British, b. 1979

Gone Surfing, Ed. 3/5

2018

archival pigment print

18 x 24 in.

unframed

Estimate: \$3,000-\$4,000



LOT 87

Willie Christie

British, b. 1948

Captain's Table, Ed. 2/20

1984

archival pigment print

Image: 21 x 21 / Paper: 26 x 24 in.

unframed

Estimate: \$2,500-\$3,000



LOT 88

Willie Christie

British, b. 1948

Canoe, Ed. 2/20

1984

archival pigment print

Image: 21 x 21 / Paper: 26 x 24 in.

unframed

Estimate: \$2,500-\$3,000



LOT 89

Willie Christie

British, b. 1948

Ballgame on the Beach, Ed. 2/20

1975

archival pigment print

Image: 21 x 21 / Paper: 26 x 24 in.

unframed

Estimate: \$2,500-\$3,000



LOT 90

David Yarrow

British, b. 1966

The Dogfather, Ed. 2/12

2022

archival pigment print

56 x 90 in.

Frame: 71 x 105 in.

Estimate: \$25,000-\$30,000



LOT 91

Mark S. Kornbluth

American, b. 1966

Prince and Elizabeth, Ed. 3/10

2021

dye sublimated on aluminum

48 x 52 in.

Frame: 50 x 54 in.

Estimate: \$7,000-\$9,000



LOT 92

Mark S. Kornbluth

American, b. 1966

Clock Tower, Ed. 1/10

2021

dye sublimated on aluminum

48 x 73 in.

Frame: 50 x 75 in.

Estimate: \$8,000-\$10,000



LOT 93

Steve McCurry

American, b. 1950

Boats on the Sulu Sea, Ed. 3/15

1985

FujiFlex Crystal Archive Print

30 x 40 in.

Frame: 32 x 44 in.

Estimate: \$7,000-\$8,000



LOT 94

Steve McCurry

American, b. 1950

Girl on Ship Prow, Ed. 1/15

2011

FujiFlex Crystal Archive Print

30 x 40 in.

Frame: 32 x 44 in.

Estimate: \$7,000-\$8,000



LOT 95

Steve McCurry

American, b. 1950

Red Boy, Ed. 9/15

1996

FujiFlex Crystal Archive Print

30 x 40 in.

Frame: 32 x 44 in.

Estimate: \$10,000-\$15,000



LOT 96

Jan-Oliver Wenzel

German, b. 1967

La Defense II, Paris, Ed. 3/20

1990

photograph

11 1/2 x 7 3/4 in.

Frame: 21 1/4 x 17 1/4 in.

Estimate: \$1,000-\$1,200



LOT 97

Maggie Taylor

American, b. 1961

But Who Has Won?

2007

digital print

15 x 15 in.

Frame: 26 x 26 in.

Estimate: \$2,400-\$3,200



LOT 98

Joyce Tenneson

American, b. 1945

Suzanne with Lit Arm, AP

1992

infused dye sublimated on aluminum

24 x 20 in.

Estimate: \$4,500-\$5,500



LOT 99

Lynn Geesaman

American, 1938-2020

Damme, Belgium (4-04-41c-4), Ed. 4/15

2004

Chromogenic print

19 x 19 in.

Frame: 29 5/8 x 29 5/8 in.

Estimate: \$1,600-\$2,000



LOT 100

Joel Meyerowitz

American, b. 1938

Winter, Cypresses, Early Morning, Tuscany, Ed. 2/15

2002

Chromogenic print on Kodak Endura paper

24 x 20 in.

Frame: 33 1/2 x 28 1/2 in.

Estimate: \$7,000-\$9,000



LOT 101

Joel Meyerowitz

American, b. 1938

Winter, Wisteria, Tuscany, Ed. 1/15

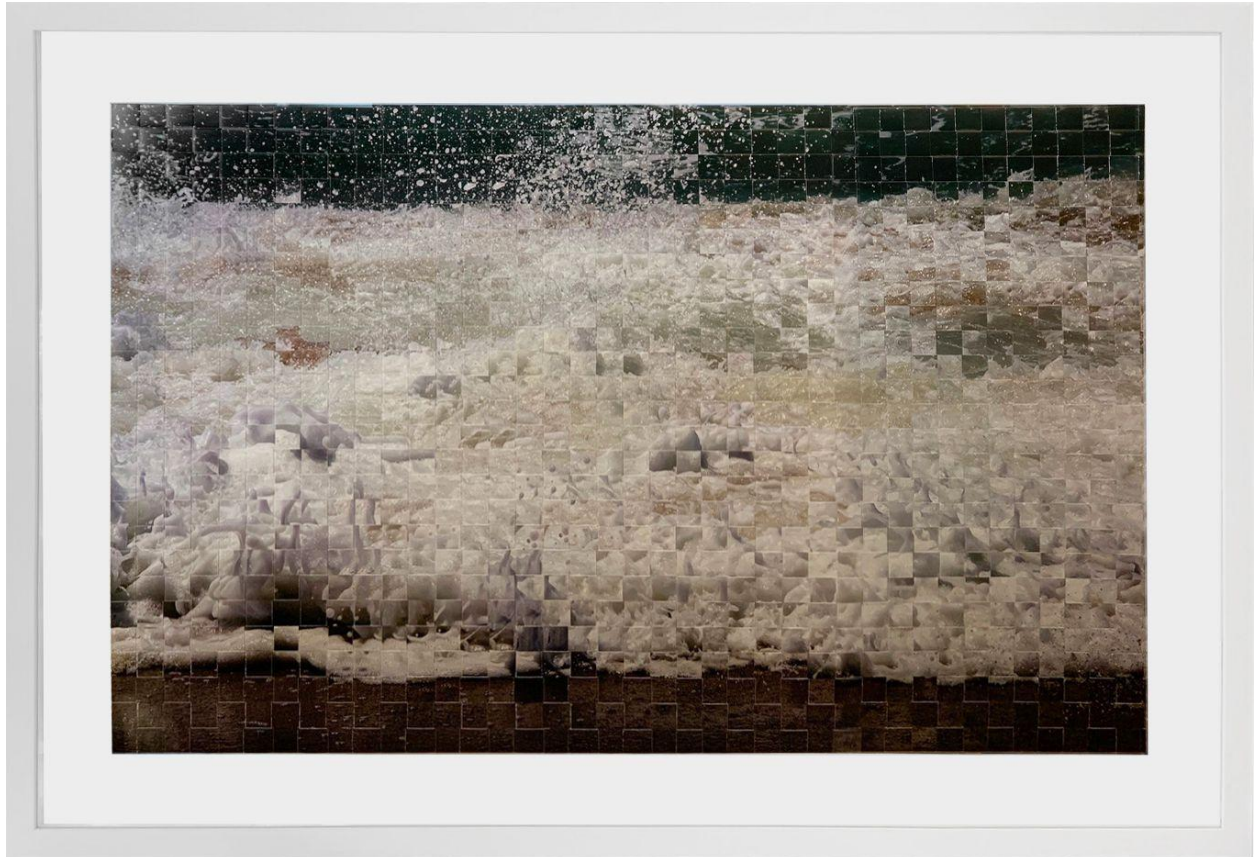
2002

Chromogenic print on Kodak Endura paper

24 x 20 in.

Frame: 33 1/2 x 28 1/2 in.

Estimate: \$7,000-\$9,000



LOT 102

Debranne Cingari

American, b. 1963

Turbulence 3

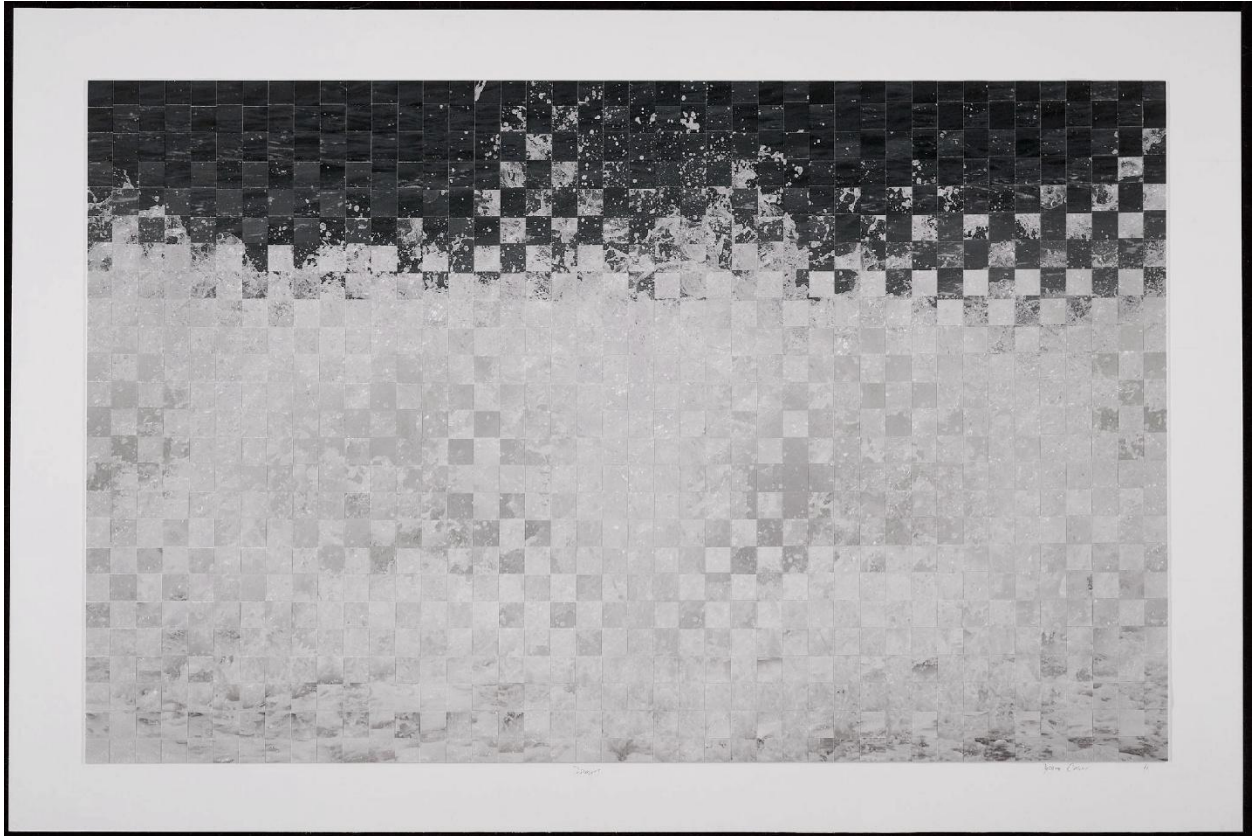
2020

Handcrafted Weaved Canson Archival Photograph

26 x 42 in.

Frame: 32 x 48 in.

Estimate: \$5,000-\$6,000



LOT 103

Debranne Cingari

American, b. 1963

Droplets

2020

Handcrafted Weaved Canson Archival Photograph

26 1/2 x 42 in.

Frame: 32 x 48 in.

Estimate: \$5,000-\$6,000



LOT 104

Debranne Cingari

American, b. 1963

Mush

2012

dye sublimation on aluminum

30 x 45 in.

Frame: 31 1/2 x 46 1/2 in.

Estimate: \$3,000-\$4,000



LOT 105

Debranne Cingari

American, b. 1963

In the Distance

2018

dye sublimation on aluminum

20 x 20 in.

Frame: 21 1/2 x 21 1/2 in.

Estimate: \$1,500-\$2,000



LOT 106

Robert Longo

American, b. 1953

Untitled (Cuore Ingrato), Ed. 1/25

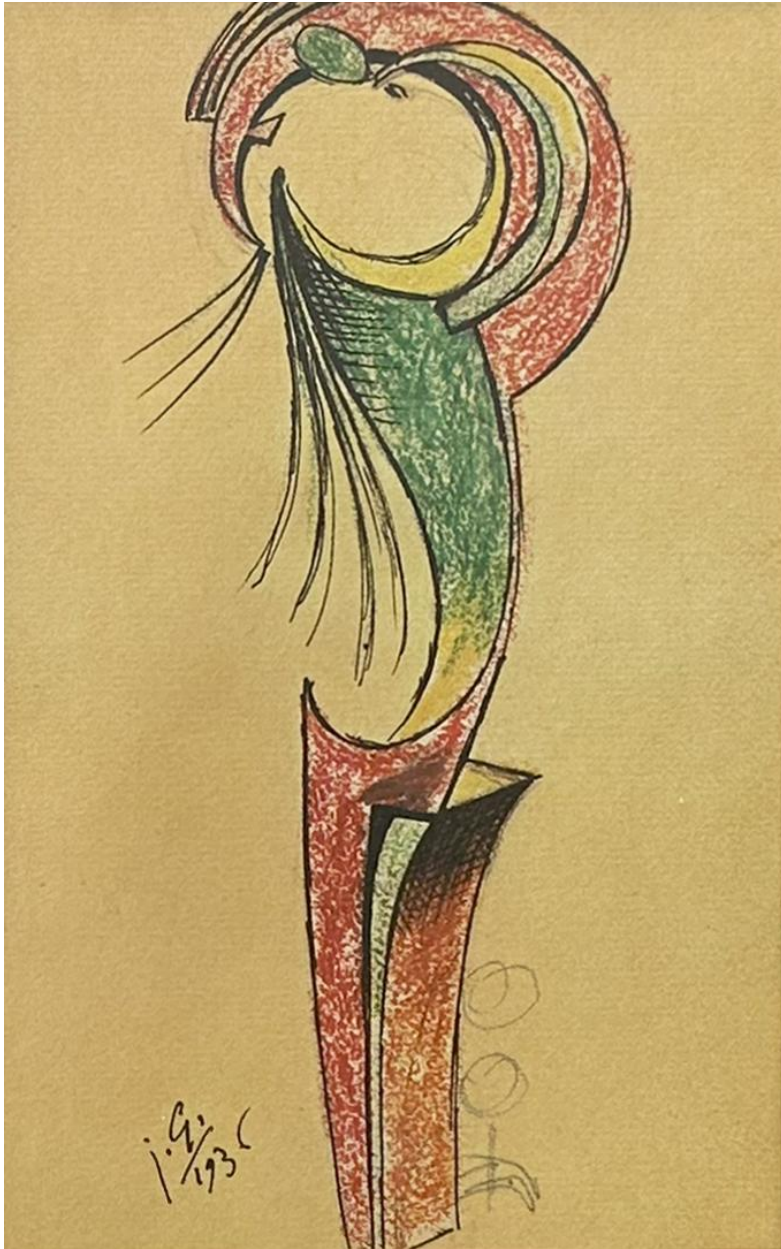
2017

archival pigment print

Image: 28.5 x 46 in. Paper: 30.63 x 47.8 in.

Frame: 36 3/4 x 52 3/4 in.

Estimate: \$9,000-\$12,000



LOT 107

Julio González

Spanish (1876-1942)

Untitled

c. 1935

ink and pastel on paper

8 1/2 x 5 1/2 in.

Frame: 16 1/4 x 12 5/8 in.

Estimate: \$10,000-\$12,000



LOT 108

Julio González

Spanish (1876-1942)

Untitled

c. 1935

ink and pastel on paper

8 3/4 x 6 3/4 in.

Frame: 16 5/8 x 14 1/8 in.

Estimate: \$10,500-\$12,500



LOT 109

Julio González

Spanish (1876-1942)

Untitled

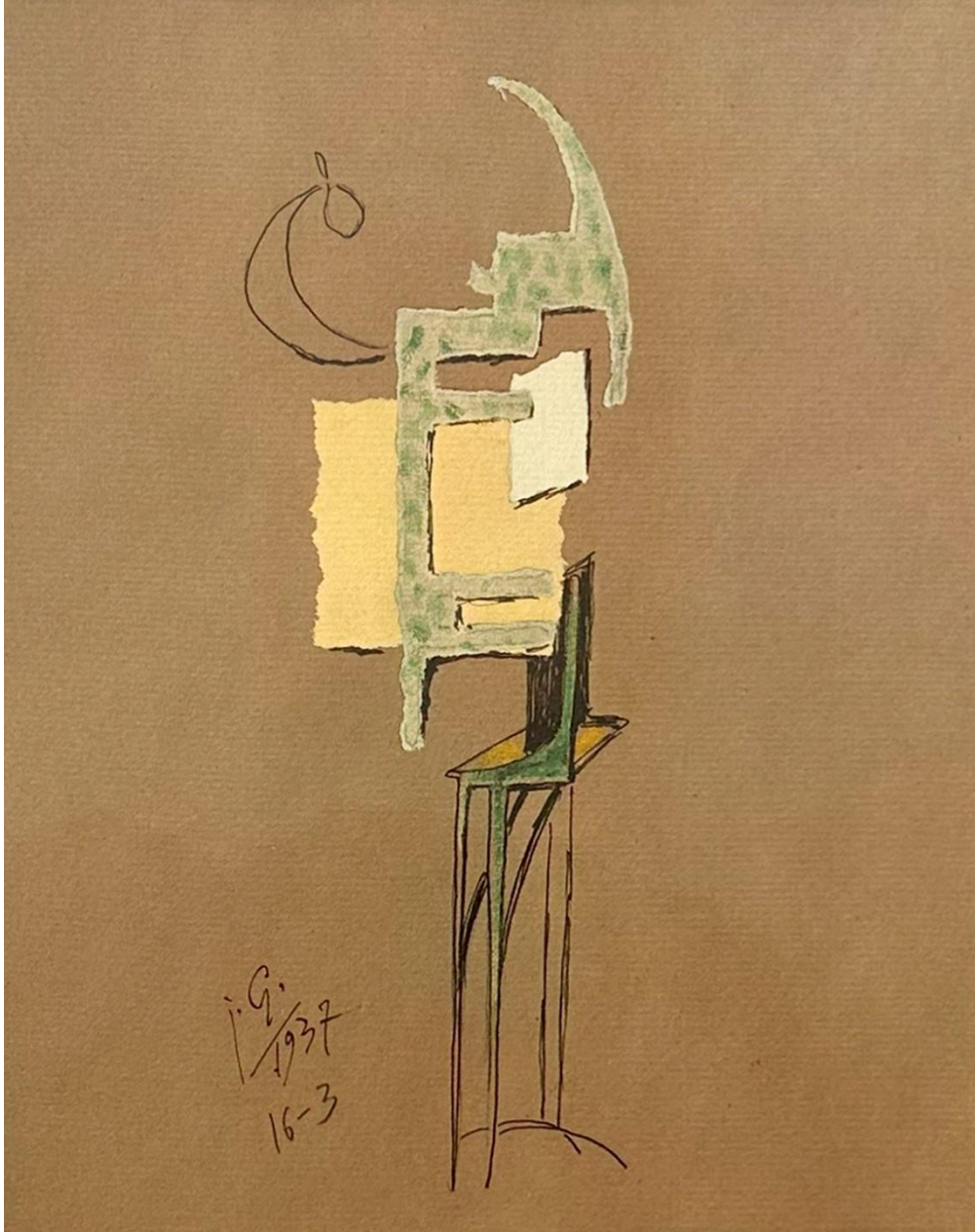
1939

ink and pastel on paper

9 x 7 in.

Frame: 16 5/8 x 14 1/4 in.

Estimate: \$11,000-\$13,000



LOT 110

Julio González

Spanish (1876-1942)

Untitled

1937

ink and pastel on paper

8 3/4 x 7 in.

Frame: 16 5/8 x 14 1/8 in.

Estimate: \$10,500-\$12,500



LOT 111

Bjorn Skaarup

Danish, b. 1973

American Flamingo, Bahama, Ed. 1/50

2016

Color engraved etching

Image: 9 1/8 x 6 in. / Sheet: 19 3/8 x 13 5/8 in.

Frame: 21 1/8 x 15 1/2 in.

Estimate: \$1,200-\$1,500



LOT 112

Bjorn Skaarup

Danish, b. 1973

Scarlet Macaw, Honduras, Ed. 1/50

2016

Color engraved etching

Image: 9 5/8 x 6 in. / Sheet: 19 3/8 x 13 5/8 in.

Frame: 21 1/8 x 15 1/2 in.

Estimate: \$1,200-\$1,500



LOT 113

Bjorn Skaarup

Danish, b. 1973

Toucan, Belize, Ed. 1/50

2016

Color engraved etching

Image: 9 1/4 x 7 in. / Sheet: 19 3/8 x 13 5/8 in.

Frame: 21 1/8 x 15 1/2 in.

Estimate: \$1,200-\$1,500



LOT 114

Jim Rennert

American, b. 1958

Full Tilt, study, Ed. 1/10

2023

archival pigment print

14 x 11 in.

Frame: 21 1/4 x 17 1/4 in.

Estimate: \$1,200-\$1,500



LOT 115

Jim Rennert

American, b. 1958

High Stepping, study, Ed. 1/10

2023

archival pigment print

14 x 11 in.

Frame: 21 1/4 x 17 1/4 in.

Estimate: \$1,200-\$1,500



LOT 116

Jim Rennert

American, b. 1958

Battle Stance, AP

2010

bronze

7 1/4 x 3 x 3 in.

Estimate: \$2,000-\$2,500



LOT 117

Jim Rennert

American, b. 1958

Apples and Oranges, Ed. 2/9

2012

bronze and steel

26 x 6 x 6 in.

Estimate: \$8,000-\$10,000



LOT 118

Jim Rennert

American, b. 1958

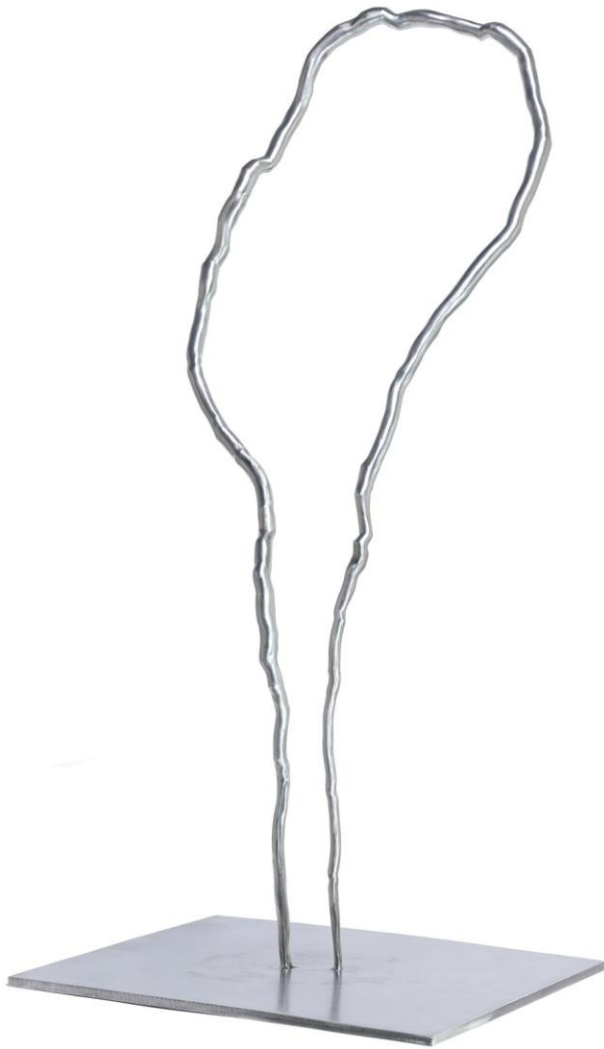
Entrepreneur, AP

2011

bronze and steel

72 x 17 x 17 in.

Estimate: \$50,000-\$60,000



LOT 119

Roxy Paine

American, b. 1966

Maquette for Portal

2013

stainless steel, accompanied by wooden base

43 x 20 x 18 in.

Accompanying wooden base: 38 x 22 x 18 1/2 in.

Estimate: \$22,000-\$25,000



LOT 120

Tom Otterness

American, b. 1952

Lovers, AP 4/10

1992

bronze with silver nitrate patina

4 3/8 x 4 x 3 1/2 in.

Estimate: \$10,000-\$15,000



LOT 121

Bruno Lucchesi

Italian, b. 1926

untitled (figure in bed)

terracotta

7 x 20 x 10 in.

Estimate: \$2,000-\$3,000



LOT 122

Jane DeDecker

American, b. 1961

Who's Watching Who, Ed. 8/31

1995

bronze

15 x 18 x 8 in.

Estimate: \$5,000-\$7,000



LOT 123

Jane DeDecker

American, b. 1961

Touch the Sky, maquette, Ed. 11/31

1996

bronze

19 x 10 x 11 in.

Estimate: \$2,500-\$3,000



LOT 124

Louise Peterson

English, b. 1962

Downward Dog, Ed. 16/99

2003

bronze

4 1/2 x 6 x 1 1/2 in.

Estimate: \$450-\$650



LOT 125

Louise Peterson

English, b. 1962

Murphy, Ed. 18/99

bronze

3 x 7 x 4 in.

Estimate: \$300-\$500



LOT 126

Louise Peterson

English, b. 1962

Dog Days (male), Ed. 35/99

2006

bronze

3 x 4 1/2 x 4 in.

Estimate: \$450-\$650



LOT 127

Louise Peterson

English, b. 1962

On the Rise, Ed. 65/99

2004

bronze

4 1/2 x 2 1/2 x 2 1/2 in.

Estimate: \$450-\$650



LOT 128

Louise Peterson
English, b. 1962
Tickled, Ed. 17/99
2015
bronze
4 x 3 x 3 in.
Estimate: \$450-\$650



LOT 129

Louise Peterson

English, b. 1962

Leg Up, Ed. 21/99

2008

bronze with wood base

3 1/2 x 4 1/2 x 3 1/2 in.

Estimate: \$450-\$650



LOT 130

Louise Peterson

English, b. 1962

Senior Moment, Ed. 44/99

2004

bronze

1 1/2 x 5 x 5 in.

Estimate: \$450-\$650

SPRING AUCTION

Opens 2:00 pm Eastern, Friday, May 1st
Closes 5:00 pm Eastern, Friday, May 9th
Online, phone, and absentee bids accepted

Bidding Increments:

The Bid Increment is the amount by which a bid will be raised each time the current bid is outdone. If two or more parties leave identical bids, the first bid received will take precedence.

Minimum Bid Amount (USD)	Maximum Bid Amount (USD)	Bid Increment (USD)
\$100	\$1999	\$100
\$2,000	\$4,999	\$200
\$5,000	\$9,999	\$500
\$10,000	\$19,999	\$1,000
\$20,000	\$49,999	\$2,000
\$50,000	\$99,999	\$5,000
\$100,000	\$1,000,000	\$10,000

Condition:

Condition reports are available on request. The absence of a condition report or reference to damage does not automatically imply that the Lot is in excellent condition or free from restoration or repair. Prospective buyers should request additional details or arrange in-person inspections to satisfy any questions about the condition of a Lot. All frames are sold "as is" and some frames may require conservation or replacement.

Extended Bidding:

Timed auctions will end at the time specified; however, in the case of competing bids, the auction house may implement extended bidding if additional bids are placed in the last two minutes of the auction to give each bidder a fair chance to raise their bids.

Buyer's Premium:

A buyer's premium of 22.5% of the hammer price will be applied to each winning bid. The buyer's premium is a charge in addition to the hammer price of the auction lot and the buyer is responsible for payment of the total winning bid + buyer's premium and any other applicable taxes or fees.

Taxes and Fees:

Applicable Sales Tax will be added to the Winning Bid + Buyer's Premium, and any additional applicable delivery fees.

Phone: (203) 869-3664

Email: contact@cavalierauctions.com

Mail: 175 Greenwich Avenue, Greenwich, CT 06830